



FUEL AND DISTANCE TAX SUBMISSION

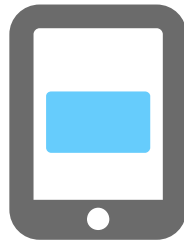
Qualified commercial vehicles* must track and report fuel purchases and distance traveled in each U.S. state or Canadian province on a weekly or monthly basis for International Fuel Tax Agreement (IFTA), International Registration Plan (IRP) and State Weight Distance Tax. Penske has several options to make fuel reporting easier, including tools that support electronic reporting methods. Onboard computers have simplified the overall process by creating records that allow data to be sent through automated pushes or emailed via a Microsoft Excel document.

FUEL SUBMISSION



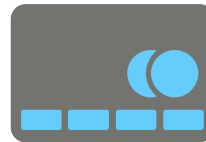
Penske Fuel Card at a Penske Location

When a driver fuels with a Penske Fuel Card or at a Penske location, fuel data is automatically transmitted to Penske, and purchase records are maintained.



Penske Driver™ App

Drivers are able to enter fuel receipts into the Penske Driver app, ensuring simple transmission to Penske.



Bulk Fuel/Wet Hose/Third Party Fuel Card

Drivers can submit fuel records to Penske in an approved Excel format via email**. (Requires an IFTA account under the carrier's name when using onsite fueling.)



Physical Fuel Receipts

Manually recorded receipts on designated Penske forms can be mailed to Penske for processing.

DISTANCE SUBMISSION



Onboard Computers

Data can be sent through automated transmissions (requires setup with Penske) or in an approved Excel format via email**. (Requires an IFTA account under the carrier's name.)

Driver Trip Reports

Driver trip reports can be mailed to Penske for processing.

*Qualified commercial vehicles as defined in accordance with IFTA, IRP and State Weight Distance Tax statute

** Excel formats should be sent to PenskeFuelTax@penske.com for approval and submission.

To learn more about how Penske can help you navigate IFTA requirements and maintain tax compliance, please contact Penske Fleet Services or visit penskefuelanddistancetax.com.

Contact us:
800-526-0664
penske.customersupport@penske.com

USPS Mail:
Penske Truck Leasing Co. LP,
Dept R - Attn: DTR Dept
PO Box 981056
El Paso, TX 79998-1056

Overnight Address:
Penske DTRs/Broker Logistics, LTD
1000 Hawkins Blvd., Suite A
El Paso, TX 79915